

## Description

ScadaLogger is a utility program that augments the data logging and reporting capabilities of PC based SCADA systems. It can interface with SCADA/MMI software that supports OPC, DDE, or OLE data interfaces.

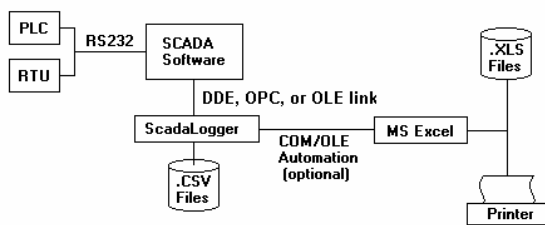
ScadaLogger can log an unlimited number of data points consisting of analog, discrete, or string tags. ScadaLogger stores collected data as \*.CSV files and can automatically produce custom reports using MS Excel.

## Features

- \* Log trigger – user selected time, event, or both
- \* Report trigger – user selected time or event
- \* Open Architecture CSV log file format
- \* Custom Excel reports
- \* Custom discrete formats i.e.: running, stopped
- \* Recognition of non-standard discrete formats
- \* User selected server startup delay
- \* Support for DDE, OPC, and OLE data interfaces
- \* Online viewing of tag values
- \* Online report viewing, editing, and printing
- \* Log file mirroring to multiple directories over a network for data backup

## Details

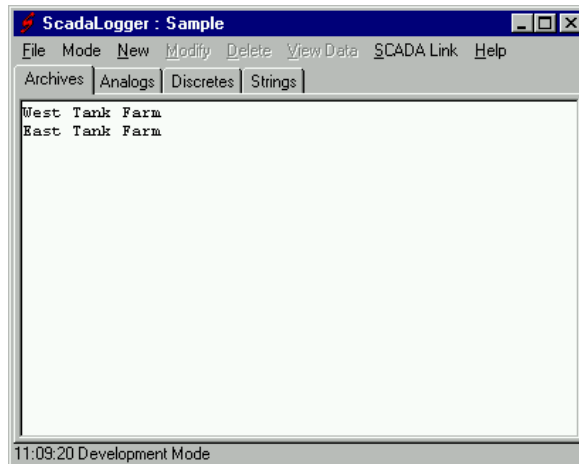
### Overview:



This diagram illustrates how ScadaLogger interacts with the SCADA software and MS Excel to allow automatic generation of custom Excel reports. Excel reports are created by using an Excel template file which includes a macro to move the report data into the custom formatted report.

This feature allows the creation of custom reports in almost any desired format. Each archive may have its own custom report.

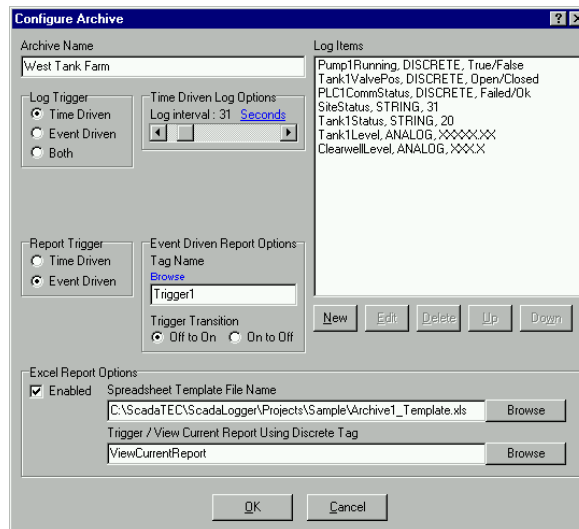
## Main Screen:



All user interaction begins at this simple main screen. Archives and tags may be added or edited from here. Tags are added by selecting the appropriate tab on the main screen and entering the tagname. Tagnames may also be copied and pasted in bulk.

The top menu provides access to file operations, SCADALink setup, on-line help and tutorial.

## Archive Setup:



This screen shot shows the many options available when adding or editing an archive. It also illustrates how simply and quickly a new archive can be created.

A nice feature is the ability to select from a list of previously defined tags when adding tags to the archive or selecting report or log triggers.

## Specifications

### Operating System

MS Windows XP  
MS Windows 2000  
MS Windows NT  
MS Windows 98

### Program

- Single 32 bit windows program file with no supporting DLLs required
- Complete development and runtime software in one program
- Password protection
- Compatible with most PC based SCADA and MMI software.
- Custom MS Excel reports
- Unlimited logs with unlimited number of tags in each log
- Time or event driven log updates
- Time or event driven reports
- Online help and tutorial files
- One step installation program

### Data Protocols Supported

OPC—preferred  
DDE  
OLE

### Tag Types Supported

Analog  
Discrete  
Strings

### Tag Formatting

#### Analog

Up to 12 digits to the left of the decimal  
Up to 11 digits to the right of the decimal

#### Discrete

1/0, True/False, On/Off, or any other user defined strings up to 255 characters

#### String

Any string length up to 100 characters is supported.

### Data Log Triggering

#### Time driven

Data is captured periodically, selectable from 1 second to 72 hours.

#### Event driven

A discrete tag transition causes data to be logged. Either a false to true or true to false transition can be selected.

#### Both

Combines time and event triggering.

### Report Triggering

#### Time driven

Daily – Any time  
Weekly – Any day at any time  
Monthly – Any day at any time

#### Event driven

A discrete tag transition causes a report to be generated. Either a false to true or true to false transition can be selected.

### Log Report Viewing, Editing, and Printing

Data is logged in \*.CSV format and may be viewed, edited, or printed online within ScadaLogger while in 'Run' mode with no loss of data.

### Custom Excel Reports

Custom reports may be designed using MS Excel. These reports may be laid out in any manner allowed by MS Excel. The help system provides a detailed example of how this is done. The report may be triggered manually or by ScadaLogger. Sample reports are provided.

### Archive File Mirroring

Additional copies of the log files, \*.CSV and \*.XLS, may be saved to one or more additional directories on the same PC or to another PC over a network.

These additional copies will be made every 5 minutes.